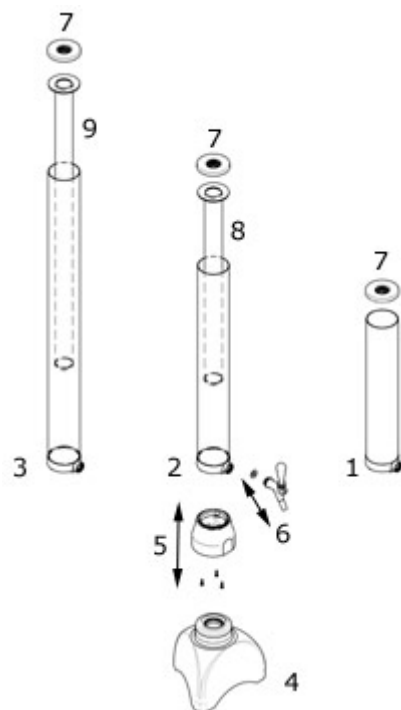


Technical specifications and materials :

All plastic materials used in the manufacture of the Metrodispenser ORIGINAL are approved by European regulations for materials destined to be in contact with food and drink (Directive 2002/72/CEE) and the Food and Drugs Administration (FDA) legislation of the United States of America (CFR 21, 177).

In compliance with food regulations all components in contact with the drink are rotation welded(no adhesives or solvents).



	Components	Contact with drink?	Materials
1	Tube M	yes	PC
2	Tube L	yes	PC
3	Tube XL	yes	PC
4	Base assembly no		Main body: ABS Crown (outer): ABS Crown (inner): PP Ballast: Concrete Screws: Stainless steel Washers: Aluminium
5	Tube connector assembly	no	Connector ABS Screws – Stainless steel
6	Tap and sealing ring yes		Body: PC Closure valve: PBT Sealing ring: EPDM Handle and spout: PBT
7	Cap y	es	PS
8	Ice Tube L (accessory)	yes P	C
9	Ice Tube XL (accessory)	yes P	C